



OUTWOOD NEWS

**OUTWOOD
NEWS**

**COPY DATE
OCTOBER**

**Friday
15th September**

*Late copy cannot
be inserted without
prior agreement.*

OUTWOOD VILLAGE SHOW 2019

**SEE PAGE 3 INSIDE
FOR FULL DETAILS
OF YOUR VILLAGE SHOW
WITH THE ANNUAL
OUTWOOD HORTICULTURAL SOCIETY
SUMMER SHOW**

**SATURDAY 31ST AUGUST
12 NOON - 5.00PM**

ADMISSION £1 - CHILDREN FREE

**LLOYD HALL
BRICKFIELD ROAD - OUTWOOD**

Please submit
copy to:
Esme Hill
CHURCH COTTAGE,
WASP GREEN LANE
or e-mail:
anne.morle
@outwood.org

JULY & AUGUST 2019

FILM OUTWARD CLUB



LLOYD HALL

Friday, August 9th

7.30 for 8.00pm

Refreshments available

Entrance donation £3

Non Members £5

Why not join the club?

Only £6 per year

Usually held every second Friday
of the month, but there will be

NO FILM IN SEPTEMBER

“Tea and Tuck Shop”

in the Hall (and or in the garden)

For parents to bring kids to play,
serving tea and cakes for the adults,
biscuits, sweets, soft drinks, fruit, crisps
and other snacks for the children.

All profits to the Hall.

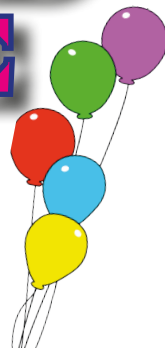
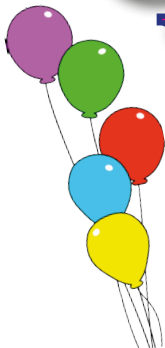


Through to end August.

Please come and support us!

Tuesdays 4.30-6.00pm

OUTWOOD VILLAGE SHOW 2019



SATURDAY 31ST AUGUST

12 NOON - 5.00 PM

ADMISSION £1 - CHILDREN FREE

BBQ

**Pilgrim Brewery
Tea & Coffee + Cakes**

OUTWOOD CRAFT'S

WOODCARVING

OUTWOOD CHEESE

THE PINK CAKE COMPANY

PLUS MORE....

**Parish Council
Outwood History
National Trust
Wildlife Aid**

**Splat the Rat!
Coconut Shy
Tin Can Alley**

Charity Raffle

Featuring a performance from The Windmill Songmen

**THIS IS A VILLAGE SHOW SUPPORTING LOCAL PEOPLE
FUN FOR ALL THE FAMILY**

CHURCH NEWS

Rector's Ramblings

I love living in the country. Though I'm only a few miles away from my old parish in Redhill it feels like another world out here. It's very much farming country and reminds me of the part of Oxfordshire I grew up in. One of the churchwardens at the church where my father was rector was a farmer (she was a farmer's wife but following the death of her husband she became the farmer) and I have many happy memories of visiting her farm as a child and the teas she used to provide for my sister and me.



Our rectory was surrounded by fields and I loved looking out at harvest time after bedtime, seeing the combine harvesters working through the night - though the real excitement came with the burning of the stubble, a practice which has been banned for a while now.

One of my favourite programmes is BBC's 'Countryfile', especially the farming bits in it and browsing through the Countryfile website the other day I was surprised to read that: *in the UK the harvest festival, also known as the harvest home, is traditionally celebrated on the Sunday nearest the harvest moon. This is the full moon that occurs closest to the autumn equinox, which is often between 21-23 September.*

That was news to me! I've always understood that the date for Harvest Festival is not a fixed one. After a little research I discovered that Harvest Festival is in actual fact a somewhat modern addition to the Church of England's calendar. Its origins can be traced to a certain Revd R. S. Hawker, a parish priest in Cornwall, who chose the first Sunday in October as a religious response to coincide with the traditional 'harvest home' celebrations, which were connected to the harvest moon but were not connected to the church.

And so there is in fact no set date for Harvest Festival in the church. In the Windmill United Benefice we are celebrating it at St Mary the Virgin, Horne on September 8th, at St John the Baptist, Outwood on 15th September and at St Bartholomew, Burstow on October 6th. This year at Outwood we are celebrating harvest in a slightly different way with an Arts and Crafts Day on Saturday 14th September from 11am – 3pm (*details page opposite*).

Even though it may not have a set date, harvest is an important time in the Christian year. It's what Orthodox Christians call *The Crown of the Year* and whereas in Anglican and Roman Catholic churches the church year begins on Advent Sunday,

CHURCH NEWS

the Orthodox Church year begins on September 1st as it is linked to the time of harvest. Jewish people also celebrate New Year around harvest time with *Rosh Hashanah*, which this year begins on September 29th.

Harvest is about reaping and sowing, the completion of one cycle and the beginning of another and so the harvest months of August and September are ending and beginning months, a time to pause, look back and give thanks, not only for the harvest around us but also for the changing seasons in our own lives:

*For the promise of harvest contained within a seed,
we thank you.*

*For the oak tree within an acorn, the bread within a grain, the apple within a pip,
the mystery of nature gift wrapped for us to sow,
we thank you.*

With love and prayers

Nicholas

Revd Nicholas Calver

The Rectory, 5 The Acorns, Smallfield RH6 9QJ

Email: nicholas.calver@btinternet.com

Tel: 01342 842224

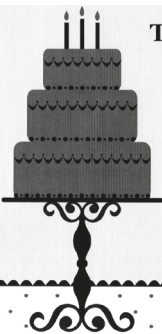


Come along to St John's Church

Harvest Weekend Arts and Crafts Day

on Saturday 14 September
from 11am - 3pm

- Displays of work from and activity of local artists and craftspersons
- Hands on opportunities including: stained glass with local stained glass artist Pippa Martin, and making peg fairies with Bloomin' Arts, a local charity that supports learning disabled adults through the arts
- Silent auction of original drawing of the church by local artist Simon Canacott (*see above*)
- Ploughman's lunches with local cider and apple juice
- If you would like more information, or would like to display your own work, please contact Rosie Yeldham (rosie.yeldham@gmail.com) or Nicholas Calver (nicholas.calver@btinternet.com)



The Pink Cake Company

tiered wedding cakes
cupcake towers
cakes with edible images
feature cakes
afternoon tea cakes

lynne.messenger@hotmail.co.uk
07780 705961

**DO YOU NEED SOMEONE TO
LOOK AFTER YOUR PETS
WHILE YOU ARE AWAY?**

Please contact Becca Hiscocks

I am happy to look after dogs, cats,
rodents, reptiles, birds or fish.

Very reasonable rates.

07879 636210 / 01342 842213

D C Read Builders & Landscapers



01342 843023

'Quality Workmanship'
info@dcreadbuilders.vpweb.co.uk
www.dcreadbuilders.co.uk

07706 467803

ALEX JONES

FUNERAL DIRECTORS & MONUMENTAL MASONS

**Renowned Caring Service
Offering Day & Night Attention**

Home Visits Available
Pre-paid Funeral Plans

Beautiful Private Chapels of Rest
Monumental Masonry

LINGFIELD 01342 832534

1 East Grinstead Road | Lingfield
Surrey | RH7 6EP

EDENBRIDGE 01732 860047

29-31 High Street | Edenbridge
Kent | TN8 5AD

OXTED 01883 730383

92 Station Road East | Oxted
Surrey | RH8 0QA

FOREST ROW 01342 822399

1 Ashdown Court | Lewes Road | Forest
Row East Sussex | RH18 5EZ

Golden Charter
Funeral Plans

A TOTALLY INDEPENDENT FAMILY CONCERN

www.alexjonesfuneraldirectors.co.uk





ROYAL BRITISH LEGION

Outwood Branch

QUIZ NIGHT

SATURDAY 21st SEPTEMBER

LLOYD HALL, OUTWOOD

7.00 for 7.30 pm

Tickets: £12.50 per person including Ploughman's Supper
Teams and individuals welcome

CASH BAR

Tickets available from 01342 842409

e-mail: OutwoodRBL@hotmail.com

AUCTION OF PROMISES

Saturday 23rd November 2019

Lloyd Hall

Raising money to improve the parking at The Lloyd Hall

Many villagers and other hall users will know that on the days of a larger event taking place at the Hall there is parking down one side of Brickfield Road and this is a potential hazard to both those using Brickfield Road and those parking on it. The Parish Council has obtained planning permission to improve the verge on that side of the road which would mean less mud for those parking, and cars a bit further off the main carriageway for those passing by.

Together we need to raise about £10,000 to cover the likely cost of these works to Highway Authority standards.

Get involved ...

Save the date and join in the fun on the evening
Donate a promise for the auction

For more information or to pledge your donation please contact
Christine or John Mankelow **01342 842764** john@themankelows.co.uk

CHURCH NEWS

Burstow Parochial Charities

Burstow Parochial Charities administers the grants made by the Henry Smith Charities to the parishes of Burstow and Outwood. Henry Smith was a wealthy entrepreneur who, when he died in 1628, left a trust fund for the relief of the poor in 202 parishes around England. Burstow Parochial Charities also incorporates bequests left to the parish of Burstow by Rev Dr Cooke and his wife Margaret, the Rev John Flamsteed and Sir Francis Montefiore. Rev Dr Cooke and the Rev Flamsteed were both Rectors of Burstow in the late 17th/early 18th centuries and Sir Francis Montefiore was a local wealthy landowner who died in the mid-20th century.

The funds are ultimately controlled by the Charity Commissioners, and Burstow and Outwood have four trustees, plus the Rector, appointed to administer the charities.

Vouchers are delivered to qualifying parishioners at the end of November/beginning of December for the purchase of food at specified stores. The amount given each year is variable, depending on the income from the charity commissioners. Donations are also given to various local groups and we give book tokens to students undertaking further education courses, to help towards the cost of books they need for their course.

We keep a small reserve of money in the charity's bank account so that we are able to respond to urgent requests to during the year to help parishioners, the requests usually coming from the Social Services or Health Visitors.

If you would like to apply for a grant or know someone else who would benefit from a grant, please apply in writing to the Rector at The Rectory, 5 The Acorns, Smallfield RH6 9QL or by email to Nicholas.Calver@btinternet.com

Treating Your Pets Like Royalty



Crown Vet Clinic

1 The High Street
Nutfield, Redhill,
Surrey RH1 4HH
crownvets.com
t: 01737 822250

Opening times:
Monday - Friday
8.30am - 6.30pm
Saturday
9am - 11.30am

Miss Nicola Williams
Mr Michael Taylor

Consultation by
appointment



ACORN SERVICES

All aspects of home and garden maintenance

Painting • Decorating
Guttering • Fencing • Gates • Lock fitting
Lawn care • Hedging • Tree pruning

No job too small



Call or text 07775 164853 or
01342 718729 for free estimate

JULY MEETING

Following the business section of the meeting, in which we gave out details and times for our Summer Lunch next month, we had an excellent presentation by Chris Connor from East Surrey Hospital to tell us exactly what Dementia/Alzheimers can do to people, and how best to cope with caring for them.

It is not just a 'condition'. Recent research has shown that it is a disease; often caused by small bleeds in the brain, and that smoking is very bad indeed. It can come on at any time, but mostly in people's mid forties. We are encouraged not to call them 'sufferers', and to become a 'buddy' to anyone with the condition, and try to help them cope with life.

Short term memory is normally the first to go, and long term memory usually the last. He likened it to a three tier bookcase, where the memories laid down in childhood are the stablest, sitting firmly on the bottom shelf. Mid life memories can more easily be shaken off the centre shelf, whilst the latest memories can most easily fall off the top one.

If you fear you find this scenario is all too familiar, see your Doctor as soon as possible, as skills can be learnt to enable you to cope. Music, and pets are known to be good therapy, and East Surrey Hospital has a special unit for dementia support, which includes families as well.

A splendid vote of thanks was given by one of our Committee members, who has been diagnosed with the problem, and has stated her intention to ignore it as far as possible, and to live life to the full. This was greeted with a huge round of applause !

Our next meeting is the summer lunch, followed in September by a cooking demonstration from Gill Potterton. We always look forward to sampling her creations !

C.L.



Finding themselves temporarily homeless, Shan and Paul moved to a caravan in a remote field.

This is one of the many reasons they didn't want to move from Outwood.

Postman Brian found them and continued his excellent service.

CHIROPODIST

Mrs Suzanne Gasson

Registered member of the British Chiropody
and Podiatry association

Hcpc registered

Home visits only

Tel: 01342 842439

**Local Babysitter
available!**



please contact
Becca Hiscocks
07879 636210

email:
helen@helenhiscocks.plus.com

Local teenager looking for;

Dog Walking, Dog Sitting,
Baby Sitting, House Sitting,
Gardening/Lawn Mowing,
Car Washing

and any other small jobs.

Please contact Patrick Smith

patchgymnast@aol.com

07884 121110

PAT CARTER

For all your electrical work

Tel: 01342 843883

Mobile: 07711 478890

Ballast • Ceramic Tiles
Dulux Paint • Fascia • Fencing
Gardening Products • Guttering
Household Goods • Insulation • MDF
Plywood • Power Tools • Roof Windows
Sand & Cement • Timber • Underground Plumbing • uPVC
All your needs under one roof!

MITCHELLS

BUILDING CENTRE

1-9 Station Road, Horley, Surrey, RH6 9HW
www.mitchellsofhorley.co.uk

Telephone 01293 820890

Monday-Friday 7.30am-5.30pm • Saturday 8.00am-4.00pm

FREE Local Delivery . FREE Parking

YOUR LOCAL TRADE & D.I.Y CENTRE

NATURE WATCH

We took one of our regular trips to the South Hams of Devon for the end of June and first few days of July. Weather was sunny with temperatures in the mid twenties, unlike back here in the South East where the mercury reached 34°C and in France it hit a record 45.9°C. The EU Satellite agency reported that temperatures in June were the highest ever recorded. Meanwhile, although the temperatures in south Devon were much more tolerable we had three days of continuous wind with gusts up to 60mph, just like the mistral in the South of France. However, wild flowers festooned the banks of the steep sided lanes with red campion, the blues of various thistles and the tall stands of yellow charlock (*Synopsis arvensis*). Along the cliff tops were swathes of creamy white wild carrot (*Daucus carota*), purple and yellow vetch, the golden yellow birds-foot trefoil and the yellow, sweet scented ladies bedstraw. These pollen and nectar packed flowers are just what the insects were looking for and on the last day of June I saw my first painted lady of the year, which was followed by twenty or more of these beautiful butterflies heading straight for flowering thistles to refuel and it is likely that these were part of one of the many waves of migration they make from North Africa to the UK.

The Painted Lady (*Vanessa cardui*) is the most widely distributed butterfly in the world with the exception of South America and Antarctica and its Latin name translates as thistle butterfly. Migration to the UK usually starts in late May to early June and they return in the autumn. Unusually their life cycle can be completed in one month, which enables a number of generations of them to make some very long migrations in a series of steps from North Africa to the Arctic Circle and return a total of 9,000 miles.



Back here in Outwood butterflies have been plentiful this year. Recent sightings have included commas, peacocks, red admirals, that scourge of cabbage crops - the large white, orange coloured small skippers and dusky brown ringlets. Sylvia Maiklem reported seeing a marbled white on the downs near Chichester - they are a typical butterfly of chalk grassland. In early July a small team of local National Trust Volunteers who have been carrying out surveys of damsel flies, veteran trees and butterflies on the Harewoods Estate, joined a couple of specialists from the Butterfly Conservation Trust who came to Outwood in the hope of seeing a rare butterfly called the White Letter Hairstreak (*Satyrrium w-album*) - the w refers to the white letter on the reverse of the wings. This butterfly is on the International Union for the Conservation of Nature (IUCN), Red List of endangered species. It is dependent on elm trees and, despite the ravages of Dutch Elm disease they have survived on the suckering of old elms and other species of elm such as the Wych Elm and other elm hybrids. We have all of these locally and were told that there are more elms in Outwood than anywhere else in Surrey. The butterflies are difficult to spot because they spend most of the time flitting around in the tree tops although they occasionally come down to feed on the nectar of bramble and creeping thistle. So, with the right guidance, a good pair of binoculars and a group of elms we spent an hour and a half at the task and were all were able to say we had seen one of these rarities.

Mike F Johnson



Home or Office
Desktop – Laptop – Network
Specialists

We Come to You!

On-site or pickup and return service

Fixed price repairs - 1000+ Clients
25 yrs+ experience - No Fix No Fee

Call Steve or Caroline

01342 834267

07771 666759

enquiries@sensiblepcolutions.co.uk

www.SensiblepcSolutions.co.uk

**KEEPING OUTWOOD
BUG FREE FOR 15 YEARS**

ANTIQUE FURNITURE RESTORATION

ALL ASPECTS OF
FURNITURE REPAIRS AND
POLISHING UNDERTAKEN

INCLUDING MODERN
FURNITURE

30 YEARS' EXPERIENCE

FREE ADVICE AND
ESTIMATES GIVEN - CALL

STEVE PEACOCK

01883 743879

STONEMAN FUNERAL SERVICE

Caring Dignified Professional

Fifth Generation Family Funeral Director Est 1865

Prepaid Funeral Plans • Private Chapels of Rest • Home Visits

24Hr Emergency Service

INCORPORATING: GALYER & CO: 45-47 HIGH STREET GODSTONE

TEL: 01883 740123 Godstone

HEAD OFFICE & FUNERAL HOME: DORAN COURT, REIGATE ROAD, REDHILL

TEL: 01737 763456 Redhill

MEMORIAL OFFICE & SHOWROOMS FUNERAL ARRANGEMENT ROOM: 49 BELL STREET, REIGATE

TEL: 01737 243164 Reigate



For free advice and guidance on Registration or the Coroner's procedure

FREEPHONE 0500 474 444





CHARTERED DESIGNERS PROJECT MANAGERS

Architecture ❖ Interior Design
Engineering ❖ Surveying
Town Planning ❖ Project Management

**For all aspects of building
design and construction**

Contact Bill Morle FCSD MFPWS

01342 843336

email: bill@a-bdesigns.co.uk



Cheeld Wheeler & Co

CHARTERED CERTIFIED ACCOUNTANTS



Taxation & Accountancy services for:

- Business Start Ups
- Limited Companies
- Individuals
- Partnerships

Call: **01737 224891**

www.cheeldwheelerandco.co.uk

Helgaz Flowers

Modern & Traditional Floristry
Flowers to suit all budgets
Weddings, Funerals
and all other occasions

01342 843777

helgazflowers@gmail.com

www.helgazflowers.co.uk

Please like us on 

1b Wheelers Lane, Smallfield, Surrey RH6 9PT





Sparrowhatch Forestry is pleased to provide the following services:

Tree Surgery - Woodland Management - Fencing

Seasoned Hardwood Logs available all year round with free local delivery

We also undertake TPO applications and Tree Surveys

www.sparrowhatchforestry.co.uk

info@sparrowhatchforestry.co.uk / 01342 477 177

Proud member of



SMALLFIELD SUPPLIES

INDEPENDENT HARDWARE & GENERAL STORE

For your home, garden and DIY requirements including ironmongery, wide range of paints, housewares, haberdashery, building, electrical and plumbing materials.

Open Monday to Friday 8:30 am – 5:00 pm Saturday 8:30 – 1:00 pm

FREE PARKING

TELEPHONE: 01342 843320

2 Woodbridge, Chapel Road, Smallfield, Surrey RH6 9NW

CONTACT YOUR MP

Sam Gyimah

✉ **Sam Gyimah MP,**
House of Commons, London SW1A 0AA

t: 020 7219 3504

w: samgyimah.com

e: sam@samgyimah.com

🐦 [@SamGyimah](https://twitter.com/SamGyimah)

f [fb.com/GyimahforEastSurrey](https://www.facebook.com/GyimahforEastSurrey)



Prestige Nursing+Care

Care and companionship where
peace of mind comes as standard

Help and support with a range of
activities from one of the UK's leading
nursing and care agencies. We offer;

- Personal Care • Companionship
- Support with domestic tasks
 - Support with daily living
- Nursing care • Specialist care
 - Assisting with shopping
 - Personal health budgets
- Direct payments • Respite care
- Sleep on call • Waking nights

redhill@prestige-nursing.co.uk
Redhill 01737 221 818



OUTWOOD PARISH COUNCIL

JULY MEETING HIGHLIGHTS

Gatwick - The meeting opened with a brief presentation from Alan Jones about the Gatwick noise monitoring system developed over this past year. It is now much easier to track the aircraft, through 'webtrak'. Flights to and from Gatwick are red and green, the greyed out flights are from other airports. It is possible to see if the aircraft is not compliant or not moving as it should be. You can see the noise monitors tracking the change in decibels (dB). The acceptable level is 54dB (recently lowered from 57dB) for the daytime and 48dB at night.

Visit <https://webtrak.emsbk.com/lgw2>

To complain about aircraft noise call 01293 311568.

Alan is a trustee of **Gatwick Airport Community Trust (GACT)** and wants to let the community know that grants are available and applications can be submitted from November onwards.

As not all of last years' £500,000 was spent, the remainder is being rolled over to the coming year. If you have a project, that needs funding, visit the website, <http://www.gact.org.uk/application.php> to check if your project is eligible for a grant.

Application 2019/868, Sawmills Green Lane.

By the time you read this the OPC will have submitted an objection to this most unsuitable development in the Greenbelt.

Climate Change - Cllr Howard wrote to both Tandridge DC and Surrey CC about their plans with regard to becoming carbon neutral.

Response from Surrey CC is that they plan to deliver a strategy for our county's environment and countryside in 2020. They also have a mission to reduce the number of cars involved in school runs.

***Come and visit
us at the
Outwood Show
to find out more
about what we
do for you***

Date of the next meeting:

Tuesday 10th September 2019 8pm in the Church Room

We would love to see more residents at our meetings

For more detailed meeting reports and any current planning applications please visit the website at www.outwood.org and click on Parish Council.

CONTACT DETAILS

PARISH COUNCIL MEETINGS

Meetings are held each month except August and December
Held in the Church Room, Wasp Green Lane at 8.00pm

PARISH COUNCILLORS

Mary Baldock	Planning & National Trust	mary.baldock@outwood.org	842358
Barry Gosling	Planning & Lloyd Hall	barry.gosling@ ..	01293 775216
Jane Howard	Chair - Footpaths & Bridleways	jane.howard@outwood.org	842456
Nick Wyer	Vice Chair - Roads & Verges, Wells Field	nick.wyer@outwood.org	841664
Rosie Yeldham	Community Matters	rosie.yeldham@outwood.org	844642

PARISH CLERK

Lucinda Charlesworth E-mail: parish.clerk@outwood.org 01342 843800
Brightleigh House, Millers Lane, Outwood, Surrey RH1 5PZ

DISTRICT COUNCILLORS

Kevin Bourne	07963 833154
Harry Fitzgerald	01342 832475
Colin White	tbc

COUNTY COUNCILLOR

Rose Thorn 01342 836852

TANDRIDGE DISTRICT COUNCIL

General 01883 722000

Noise, dangerous structures,
pest control, pollution, flooding,
tree enforcement etc.

Amenity Services 0800 7834843

Abandoned cars, flytipping,
graffiti or vandalism.

Rubbish collection BIFFA 01342 837346

Removal of unwanted vehicle 01883 732998

www.tandridge.gov.uk

SURREY COUNTY COUNCIL

General 03456 009009

Pot Holes 0300 200 1003

Verge Cutting 01342 837666

www.surreycc.gov.uk

MEMBER OF PARLIAMENT

Sam Gyimah

Email: sam@samgyimah.com

House of Commons (Direct Line) 020 7219 7643

Constituency Office Oxted 01883 715782

MEP

Daniel Hannan 020 7222 9000

GATWICK AIRPORT NOISELINE

(Freephone) 0800 393070

REDHILL AERODROME NOISELINE

Please copy any response received 01737 888123
using this Noiseline to the Parish Clerk

LLOYD HALL

Booking Secretary

Jo-Ann Harvey 07717 057485

E-mail: lloydhall.outwood@hotmail.co.uk

Management Committee Secretary

Jane Forbat 01342 842834

E-mail: lhmc@lloydhall.org

NATIONAL TRUST

Harewoods Estate Office 01342 843225

Lead Ranger - Mark Richards - 07770 887679

Area Ranger - Eleanor Yoxhall - 07769 885991

www.nationaltrust.org.uk

POLICE

Emergency Attendance 999

Report non-urgent incidents 101

Crime Prevention Advice

Mark Howells

E-mail: mark.howells@surrey.pnn.police.uk

Tandridge Safer Neighbourhood Team

E-mail: tandridge@surrey.pnn.police.uk

Neighbourhood Specialist Officer (NSO)

PC 40300 Kevin Stimson

Tel: 101 or M: 07720 061363

Email: kevin.stimson@surrey.pnn.police.uk

PCSO 12437 Conrad Cheeseman

Tel: 101

Email: Cheeseman12437@surrey.pnn.police.uk

PCSO 13539 Stuart Wren

TeL: 101 or M: 07720 050768

Email: stuart.wren@surrey.pnn.police.uk

USEFUL NUMBERS:

PEST CONTROL (Rats, wasps etc.)

Balcombe Pest Control 01444 811916

BIFFA Special Collections 01883 712333
(Option 2)

Fridges, Freezers, Furniture etc.

OUTWOOD'S PUBLIC TRANSPORT

Note: 315 stops (and drops off) anywhere in the village when hailed. For simplicity the times are given for Millers Lane.

Please make timing adjustments for stopping elsewhere.

315 Cruiser Service

Times to and from Redhill, but this bus also goes to Dormansland via Smallfield

Monday to Friday only

Leaves Millers Lane	07.48
	10.25
	13.50

The 10.25 and 13.50 buses also go to East Surrey Hospital via Redhill. Buses leave the hospital at 12.15 and 17.05 to return to Outwood.

Leaves Redhill Bus Station	09.00
	12.25
	17.15
<i>Fridays only</i>	15.37

On school days there are also buses from Millers Lane at 07.45

Buses4U

Bookings and information: 01883 732791

Website: www.buses4u.org.uk

Bus passes are valid for Tandridge District Council residents but not for Reigate and Banstead DC residents.

*Information provided by
Outwood Parish Council E&OE*

OFFICE OF THE POLICE & CRIME COMMISSIONER FOR SURREY

David Munro Police and Crime Commissioner

The public can contact the Office of the Police and Crime Commissioner in the following ways:



Telephone: 01483 630 200
Email: SurreyPCC@surrey.police.uk
Website: www.surrey-pcc.gov.uk
Twitter: www.twitter.com/@SurreyPCC
Post: Office of the Police and Crime Commissioner for Surrey
PO Box 412, Guildford, GU3 1BR

COMMUNITY SPEEDWATCH

Speed monitoring sessions have continued over recent weeks and, happily, a significant number of vehicles are travelling at speeds more in line with the limits posted.

However, we are still recording a good few that are going too fast, including an Audi on Brickfield Road at 72mph near the church.

Our volunteers will carry on their work as conditions allow over the school holiday period as traffic volume is still at quite a high level.

**KNOW YOUR LIMITS...
Nigel Shaw 842743**

1869  150 years 2019

St John the Baptist, Outwood

- 2-4 pm Saturday 3 August
Teas in the Churchyard
- 11 am Sunday 4 August
Holy Communion
- 11 am Sunday 11 August
Morning Worship
- 2-4 pm Saturday 17 August
Teas in the Churchyard
- 11 am Sunday 18 August
Holy Communion
- 11 am Sunday 25 August
Morning Worship
- 11 am Sunday 1 September
Holy Communion
- 2-4 pm Saturday 7 September
Teas in the Churchyard
- 11 am Sunday 8 September
Morning Worship
- 11am-3 pm Saturday 14 September
Arts and Crafts Day in the Church
- 11 am Sunday 15 September
 **Harvest Festival Holy Communion** 
- 2-4 pm Saturday 21 September
Teas in the Churchyard
- 11 am Sunday 22 September
Morning Worship
- 11 am Sunday 29 September
Holy Communion

DIARY OF EVENTS

AUGUST

Saturday 3rd	AFTERNOON TEAS IN CHURCHYARD
Tuesday 6th	LLOYD HALL MANAGEMENT MEETING 8.00pm - Lloyd Hall
Friday 9th	OUTWOOD FILM CLUB 'The Greatest Showman' 7.30 for 8.00pm - Lloyd Hall (See page 2)
Saturday 17th	AFTERNOON TEAS IN CHURCHYARD
Saturday 31st	OUTWOOD VILLAGE SHOW & HORT.SOC. SUMMER SHOW

SEPTEMBER

Saturday 7th	AFTERNOON TEAS IN CHURCHYARD
Tuesday 10th	PARISH COUNCIL MEETING 8.00pm - Church Room
Saturday 14th	ARTS & CRAFTS DAY AT THE CHURCH
Sunday 15th	HARVEST FESTIVAL SERVICE
Saturday 21st	AFTERNOON TEAS IN CHURCHYARD
Saturday 21st	ORBL QUIZ NIGHT 7.00 for 7.30pm - Lloyd Hall
Thursday 26th	LLOYD HALL MANAGEMENT MEETING

OUTWOOD VILLAGE WEBSITE www.outwood.org

The website Diary page, maintained by Outwood News, lists all village events (*of which we are aware*) taking place up to a year in advance.

Why not take a look to avoid a clash of dates!

LLOYD HALL

LHMC meetings will take place:

Tuesday 6 August: 8pm in the Chilvers Room, Lloyd Hall

Thursday 26 September: 8pm in the Chilvers Room, Lloyd Hall

Love Lloyd Hall 50/50 Club

JULY 2019 DRAW

1st Prize	Ticket no: 24	£72.50
2nd Prize	Ticket no: 18	£43.50
3rd Prize	Ticket no: 05	£29.00

For details of the 50/50 club contact Robin Kirkland - robin@boralo.com

A fun evening was enjoyed by more than 50 people
at the July Film Club, in Lloyd Hall.

We watched the 'feel good' movie Fisherman's Friend, a true story about Cornish fisherman singing sea shanties, and becoming famous and releasing a Long playing record which soared up the charts.

Adding to our enjoyment, we had our very own Song men, The Windmill Song men, who entertained us, and had us singing lustily, during the interval!

Thank you gentlemen (and Ginette who trains, encourages and organises them !)
you really made it a very special evening !

Shân Daniels.

Shoestring
PRODUCTIONS

VINTAGE

An Entertainment in the style of Old Time Music Hall

*Comedy, songs and music
with lots of audience interaction*

Ploughman's Supper included

Refreshments available

LLOYD HALL

Saturday October 19th

7.30pm (doors open 7.00)

Tickets £15

Box Office: 01342 843063 - shoestringp@gmail.com

CHRIS ANDREWS GARDEN MAINTENANCE

CITY & GUILDS HORTICULTURE

GRASS CUTTING,
HEDGE CUTTING,

TREE & SHRUB PRUNING,
BEDS & BORDERS WEEDED
& MAINTAINED, PLANTING,
GENERAL CLEARING & TIDYING

ESTABLISHED 20 YEARS
REFERENCES AND PHOTOS AVAILABLE

CALL CHRIS

TEL. 01342 841583

MOB. 07810 748852

4 WHITEWOOD COTTAGES, WHITEWOOD LANE,
HORNE, RH9 8JR

R D MINTER

PLUMBING & HEATING

R D Minter Plumbing and Heating are Gas Safe Registered and undertake all types of domestic plumbing such as:-

- New central heating installations and boiler changes
- Kitchen plumbing installations
- Bathroom installations and designs
- New radiators and thermostatic valves
- Under floor heating
- Pressurised systems
- Investigation and fixing of leaks
- Landlord Gas Safety (CP12) certificates



If you want advice or a free estimate please call:

07734 152025

email: minter666@gmail.com

www.minterplumbing.com

L.A. ROWE

PLUMBING & HEATING

Tel: 01342 844 600

Mob: 07801 531 423

Working locally for 17 years

Bathrooms • Showers

Kitchens • Boilers

Central Heating

Gas Installation

Guttering & Leadwork



reg. number
028229W



164781



Gayton Veterinary Group

www.gayton.co.uk



Consultations Monday to Saturday
9am - 7pm

24 hour care at our Redhill surgery
by our own team of vets and nurses.

Gayton House,
40 Hatchlands Road,
Redhill, Surrey RH1 6AT
01737 761475

7 South Parade,
Horley Row,
Horley, Surrey RH6 8BH
01293 771560



OUTWOOD CRICKET CLUB

www.outwoodcricket.club

The club continued to enjoy league success in June and July.

The 1st and 2nd XI lost their unbeaten records but remain in strong contention for honours. The 1st XI are only 5 points off the top of Division One, despite having lost two games. The 2nd XI are still top of their league, also having lost two games. We have had a good number of players available in the first part of the summer, but as the season wears on the challenge will be to put out competitive sides as the holiday period kicks in.

We lost our quarter final in the Surrey Slam to Horley Hackers and so are out of this season's competition. However, we have successfully bid to host the regional final which is scheduled to take place w/c 5 August so keep your eyes open for news of the fixture date. It promises to be a thrilling evening with a high standard of cricket on show.

Our Under 10 Academy side have won their league with one game to spare. This group of youngsters show a great deal of promise and so far remain unbeaten against all comers with one match to play. They are the future of our club and we are rightly proud of the cricket they play and the way they conduct themselves on the pitch.

Our ladies have not been faring so well in their own Slam competition, but they have had some really close games against tough opposition. The recent friendly against Nantes, a touring side from France was a great affair with our visitors requesting a proper cricket tea for afters, and staying on at the club until 10pm!

Follow us on our club website www.outwoodcricket.club or on our Facebook, Instagram or Twitter accounts.

PAUL RICHARDS UPHOLSTERY

All aspects of Upholstery
and Re-Upholstery undertaken

Fabrics and Foams Available

Quality you CAN Afford

Traditional Workmanship by a Skilled Craftsman



All Upholstery Carried Out In Our Own Workshops

20 Years Experience

*From Chairs to Chaise, Seats to Settees
Portfolio Available*

Free Estimates and Advice

Trindles Farm, Plough Road, Smallfield, RH6 9JN

Phone/Fax: 01342 619277

Mobile: 07949 510877

Paul.Richards.upholstery@gmail.com

S. Martin Horticulturist

Specialist in the Pruning
and Maintenance of plants

R.H.S Diploma in Horticulture

Keen interest in rare plants

Would prefer customers who
want their garden improved
as well as maintained

Please call

07443 415541



Paracise™ classes coming to Outwood Village Hall in September on Tuesday mornings

For details contact Eileen on eileenmfraser@hotmail.com or 07702109791

Classes are already running on Mondays 4.30pm and Wednesdays 11.30am at Salfords Village Hall, Honeycrock Lane.

Come along and give it a go.

What is Paracise™ and why is it different?



Paracise™ is a brand new exercise class that is designed to be gentle on the joints but still effective at improving fitness. Flowing smoothly through movements designed to improve posture, balance, mobility and flexibility, whilst improving your muscle memory.



The classes are 45 minutes of standing exercise (no floor work) with fabulous music and delivers a “feel good factor”. You don’t need any equipment, just the desire to improve fitness and feel better. Classes are suitable for everyone



Building and Electrical Services NICEIC Certified, Trading Standards and 'Which' Approved

Extensions, Improvements, Remodelling

Electrical Installation, Inspection, Testing and Certification to Domestic, Commercial and Industrial Part P compliant.

Find me on 'Trading Standards' and 'Which Trusted Traders' websites where **reputation** and **reliability** matters.

Contact **Chris Yeldham** in **Outwood**

01342 844642 - 07801 519789 chris@yeloshield.co.uk

www.yeloshield.co.uk

OUTWOOD NEIGHBOURHOOD WATCH

JULY REPORT



There was a robbery on Outwood Lane in July. I continue to hear about attempts to defraud people by phoning them to say that attempts are being made to withdraw money from their bank account.

I recently heard a talk by Giles York the Chief Constable of Sussex Police. He gave some insights about why we don't see so many police on the beat and how the forces' resources are stretched. I hope you find it interesting too.

1. Police officers are investigating historic crimes. For example, in Rotherham sex exploitation of vulnerable children is currently thought to involve over 1,200 victims
2. The police have a changing approach to victims of domestic abuse. Primarily, today complainants tend to be believed and their cases are followed up rather than ignored.
3. There are emerging on-line crimes that are stretching police resources.
4. The 101 non-emergency number is swamped by non-crime incidents. Mental health issues and people in crisis are not crimes but can take up a lot of police time.

Jane Howard

janeweston899@btinternet.com

01342 842456

07753 602656

WANT TO ADVERTISE IN OUTWOOD NEWS?

For more information and to check availability
please contact John Mankelow: **01342 842764**
or Anne Morle: **01342 843336**
anne.morle@outwood.org



REVIVAL OF CHRISTMAS TREE FESTIVAL AT ST.JOHN'S CRISTMAS 2019

The festival will be held on **Saturday 14th**
and **Sunday 15th December 2019**

For details contact: Helen Winter
winterhelen@icloud.com



IN AID OF
ST CATHERINE'S
HOSPICE

Registered charity number 281362
and as a company in England no 1525404.



Burstow Friends of St. Catherine's Hospice



Call my Bluff Wine Tasting Evening
Saturday 5th October

7.00 for 7.30pm at Lloyd Hall, Outwood

Think you know your Sancerre from your Sauvignon Blanc,
your Merlot from your Malbec?

Join us for a wine tasting event with a difference - in the style of the game
show 'Call My Bluff'.

Put your wine knowledge to the test at this light-hearted evening.

Tables of 8 or we can seat you with others on the night.

Cash Bar

Tickets £25 including 2 Course Supper with coffee
plus an exciting selection of wines for tasting

Tickets from Christine 01342 842764
christine@themankelows.co.uk

This event has sold out on previous occasions. Book early to avoid disappointment.

Outwood Summer Ball 2020

*We are delighted to announce that the much loved
Summer Ball is returning next year and will be held
on **Saturday 20th June 2020**
at the Lloyd Hall.*

*Details to follow in future editions of the
Outwood News
Save the date!*





National Trust



The Outwood Volunteers have started their annual farmland butterfly survey on Burstow Park Farm. It is part of the UK butterfly monitoring scheme, aimed at getting a better understanding of how these important 'indicator species' are faring across the UK (so called because they are a good indicator of how our habitats are doing).



During July, we also had a great opportunity to see White-letter hairstreak butterflies on our Elm trees, on the edge of Outwood Common. An expert from the charity Butterfly Conservation came down and showed us how to spot them. It can be difficult as they tend to spend most of their time in the top of the canopy of large Elm trees.

Unfortunately this species is now extremely rare because they rely solely on these trees for their survival, and so many have succumbed to Dutch Elm disease. We're very fortunate to have a few magnificent Elms on the Harewoods Estate, which seem to be resistant to the disease. We're hoping to be able to grow on some saplings that we can plant around the estate, to ensure they survive in the long term.

Eleanor Yoxall - National Trust Ranger (Harewood Estate & Limpsfield Common)

07769 885991

email:eleanor.yoxall@nationaltrust.org.uk



Premier Refurbishments

LOCAL COMMERCIAL AND DOMESTIC DECORATING AND REFURBISHMENT

**PREMIER.REFURB@YAHOO.CO.UK
07801 689408**

Great value holidays!

I can arrange...

Flights • Package Holidays • Hotels
Tours • Tailor made itineraries • Last minute availability • Weddings & Honeymoons

For expert advice and assistance, call Donna today!



Donna Rowe

0800 954 5216 • 07801 342309

donnar@travel-pa.com

www.travel-pa.com/donnar

ABTA
87032 / V0404



Amie Electro

Amie Electro the friendly and professional Electrician you can trust.
Residential and commercial, single phase and three phase.
Complete and partial rewires.

Fusebox replacement and upgrades.

Inspection, testing, certification, maintenance and more!



Susanne Heldwein trading as Amie Electro. Thorough, methodical and solution oriented work attitude. Active, positive,

straightforward and ethical approach. All works carried out personally.. taking good care of your property. Offering the full range of domestic and commercial electrical services.

Qualified with distinction as electrical installer (Munich, Bavaria, West Germany 1990). Established in the UK in 2011. City & Guilds Level 3 Diploma in Electrical Installations.

Part P registered.

Domestic & Commercial

Part P registered

01342 888654 / 07951 179146

mail@amie-electro.co.uk

Find the reviews

@ www.amie-electro.co.uk

Single Phase & Three Phase

Amie Electro



01342 843883
07711 478890

PART P CERTIFIED
NICEIC APPROVED



Fusilier
Electrical Limited

Contact Pat or Adam Carter
info@fusilierelectrical.co.uk

www.fusilierelectrical.co.uk



**We hold a Coffee Morning at Lloyd Hall
every Wednesday from 10.45 to 12 noon**

Everybody is very welcome to come along and make
some new friends whilst enjoying real coffee
and homemade cake

- only £3 for as much coffee & cake as you can manage.

OUTWOOD NEWS COPY DATES

ISSUE

COPY DATE

**Dates for November & December together with 2020
will be printed in October's Outwood News.**

NOTE: Please submit copy either as finished artwork (a PDF of the correct size) or, if using WORD, in the simplest form. Please avoid using text boxes.

CONTENTS

	<i>Page</i>
CHURCH NEWS	4, 5, 8 & 25
CHURCH SERVICES	19
COFFEE MORNING	29
CONTACT DETAILS	17
DIARY OF EVENTS	20
FILM CLUB	2
LLOYD HALL	21
NATIONAL TRUST	27
NATURE WATCH	11
NEIGHBOURHOOD WATCH	25
OUTWOOD BRITISH LEGION	7
OUTWOOD CRICKET CLUB	23
OUTWOOD VILLAGE SHOW	COVER + 3
PARISH COUNCIL	16 & 17
POLICE & CRIME COMMISSIONER	18
PUBLIC TRANSPORT	18
SPEEDWATCH	18
ST. CATHERINE HOSPICE	26
TEA & TUCK SHOP	2
W.I.	9

- ✓ Mot's
- ✓ Servicing
- ✓ Cambelts
- ✓ Diagnostics
- ✓ Clutches
- ✓ Batteries
- ✓ Tyres
- ✓ Exhausts
- ✓ Brakes
- ✓ Air con. etc.

Windmill Garage

Outwood

A friendly, trustworthy, family run business which has been built upon recommendation since 1966.

For more information...
Please check out our website or give us a call.



All work is carried out in-house

Good Garage Scheme Member Since 2007



01342 842132

www.windmill-garage.co.uk

Outwood Common, Outwood, Surrey, RH1 5PW

Free estimates & fully insured



PAC handyman services

PAC Handyman Services is your local solution to everyday building, maintenance and installation projects within the home and garden.



Tel: 01342 843348 | 07711 939370 | www.pac-handyman.co.uk



AWARD WINNING OUTDOOR SPACES
www.we-love-plants.co.uk
 01883 744 020



FOR YOU AND YOUR FAMILY

- Wills and power of attorney
- Trusts and estate administration
- Buying and selling property
- Divorce and relationship breakdowns
- Resolving disputes
- Managing your business

It can be tricky when you are making major decisions in your life to know where to start. Providing legal advice is about understanding your perspective and exploring your concerns to help find the right solution for you.

harrops-hepburn.co.uk

01883 723712

Redhill | [Oxted](#) | Wimbledon | Teddington | Woking | Camberley

